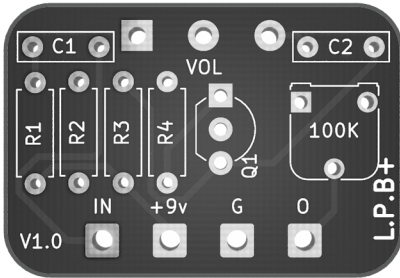


# L.P.B+



L.P.B+ B.O.M - Five-Cats-Pedals.co.uk

| Location | Value  | Type                           |
|----------|--------|--------------------------------|
| R1       | 430k   | Resistor                       |
| R2       | 43k    | Resistor                       |
| R3       | 10k    | Resistor                       |
| R4       | 390r   | Resistor                       |
| C1       | 100nF  | Box Cap                        |
| C2       | 100nF  | Box Cap                        |
| Q1       | 2N5088 | NPN Silicon Transistor - E/B/C |
| VOL1     | A100K  | Potentiometer                  |

You will notice our board has a 6mm trimpot space - you can use **EITHER** the standard A100K external pot or the 100k trimmer. Don't use both! If you want to set the board to one volume and forget, just use the trimmer. If you want to control the boost via a pot (as per the original) just add the pot.

This board can build the L.P.B or the Screaming Bird. To build the screaming bird alternative, simply swap the two components below:

### Screaming Bird

C1: 2.2nF

C2 : 2.2nF

[WWW.FIVE-CATS-PEDALS.CO.UK](http://WWW.FIVE-CATS-PEDALS.CO.UK)



/FIVECATSPEDALS



/FIVE.CATS.PEDALS