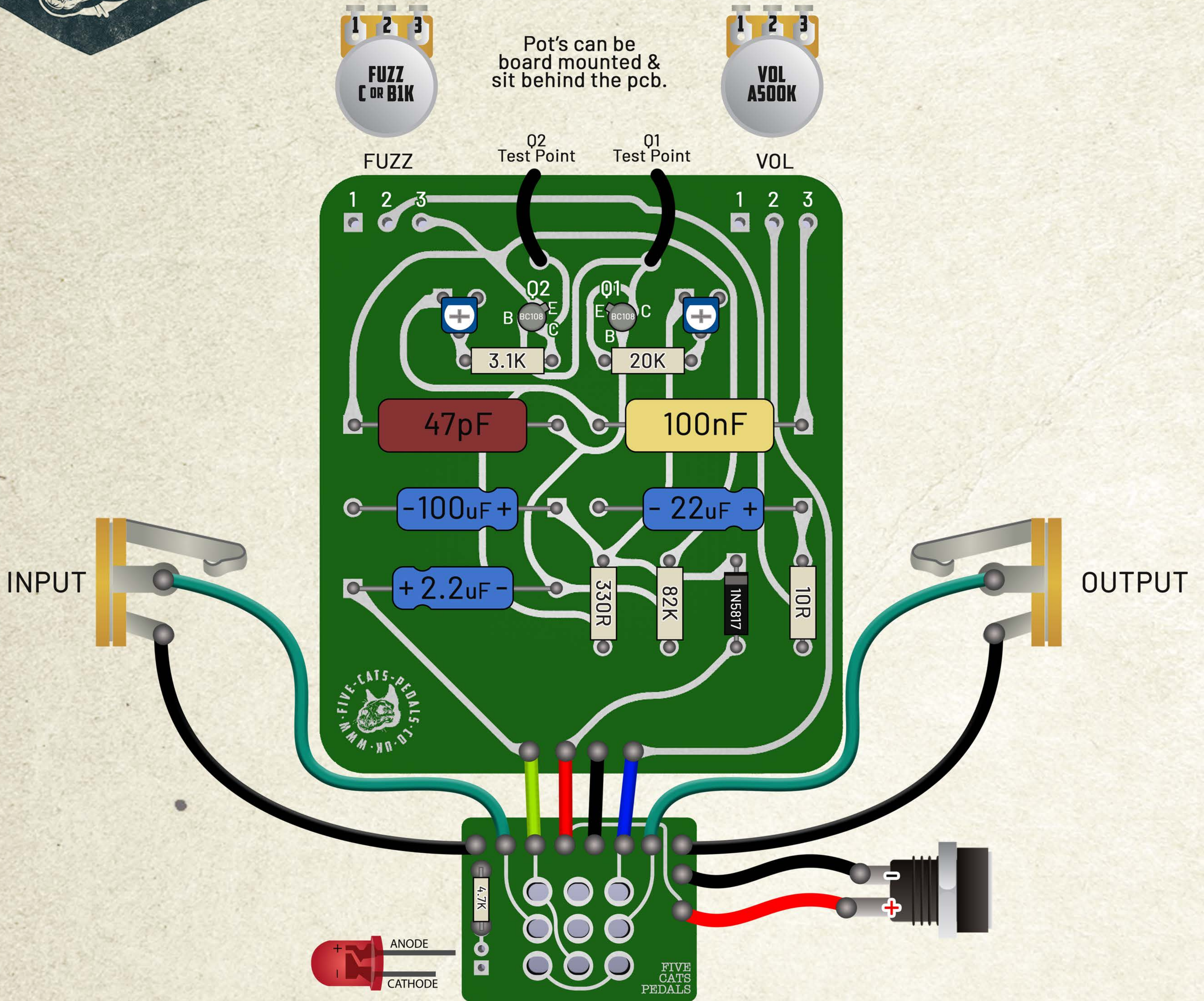




Vintage Style Fuzz Face Wiring

Last updated: 20-10-24



Transistor's - BC108
 hFE: Q1+ Q2 - 250-300
 Q1 Collector Voltage: 1.35V
 Q2 Collector Voltage: 5.75V

Dimension: 77mm x 88mm
 she's a big girl!

Mods: Some folk prefer a C1K fuzz pot
 Volume mod: Swap 330R for 1K